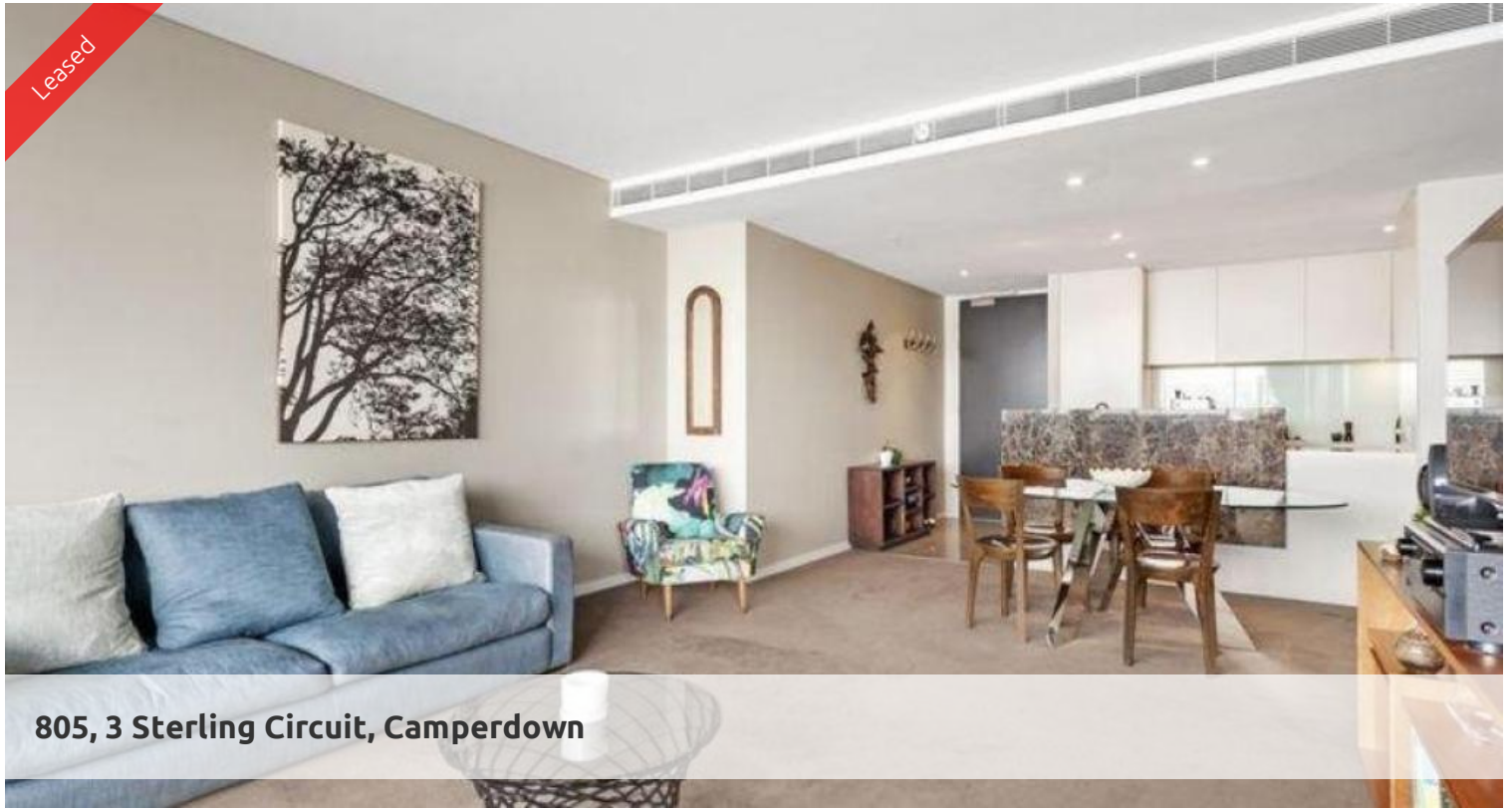


Leased



805, 3 Sterling Circuit, Camperdown



## SPACIOUS APARTMENT WITH CITY VIEWS!

Situated on level 8 with extensive city views from every room this apartment has a relaxing, ambient feel that you soak in as soon as you walk through the door.

This apartment features two large bedrooms both with walk-in wardrobes and large en-suite, gourmet kitchen with European gas appliances, open plan living which opens onto large timber loggia perfect for alfresco entertaining as well as internal laundry and one car space and storage cage. There is also a study area off the living/dining.

Being in The City Quarter Complex you will be able to enjoy the free, access to your choice of a 50 metre outdoor or 25m indoor pool and two gymnasiums. The complex also has 24 hour security, a Japanese restaurant, cafe & convenience store.

Only a 10 minute bus ride to the city or an easy stroll to Glebe, Broadway, Leichhardt and Newtown which are just around the corner.

Please call Miki to inspect on 8262 8262.

The above information provided has been furnished to us by the vendor/s. We have not verified whether or not that information is accurate and do not have any belief in one way or the other in its accuracy. We do not accept any responsibility to any person for its accuracy and do no more than pass it on. All interested parties should make and rely upon their own inquiries in order to determine whether or not this information is in fact accurate.

🛏 2 🚿 2 🚗 1

**Price**

P.O.A.

**Property Type**

Rental

**Property ID**

1436

### Agent Details

William Chen - 0430 026 436  
william@greenciff.com.au

### Office Details

Greenciff Sydney Kent St  
Level 10/488 Kent Street Sydney NSW  
2000 Australia  
02 8823 8818

**greenciff**  
Inner city specialists