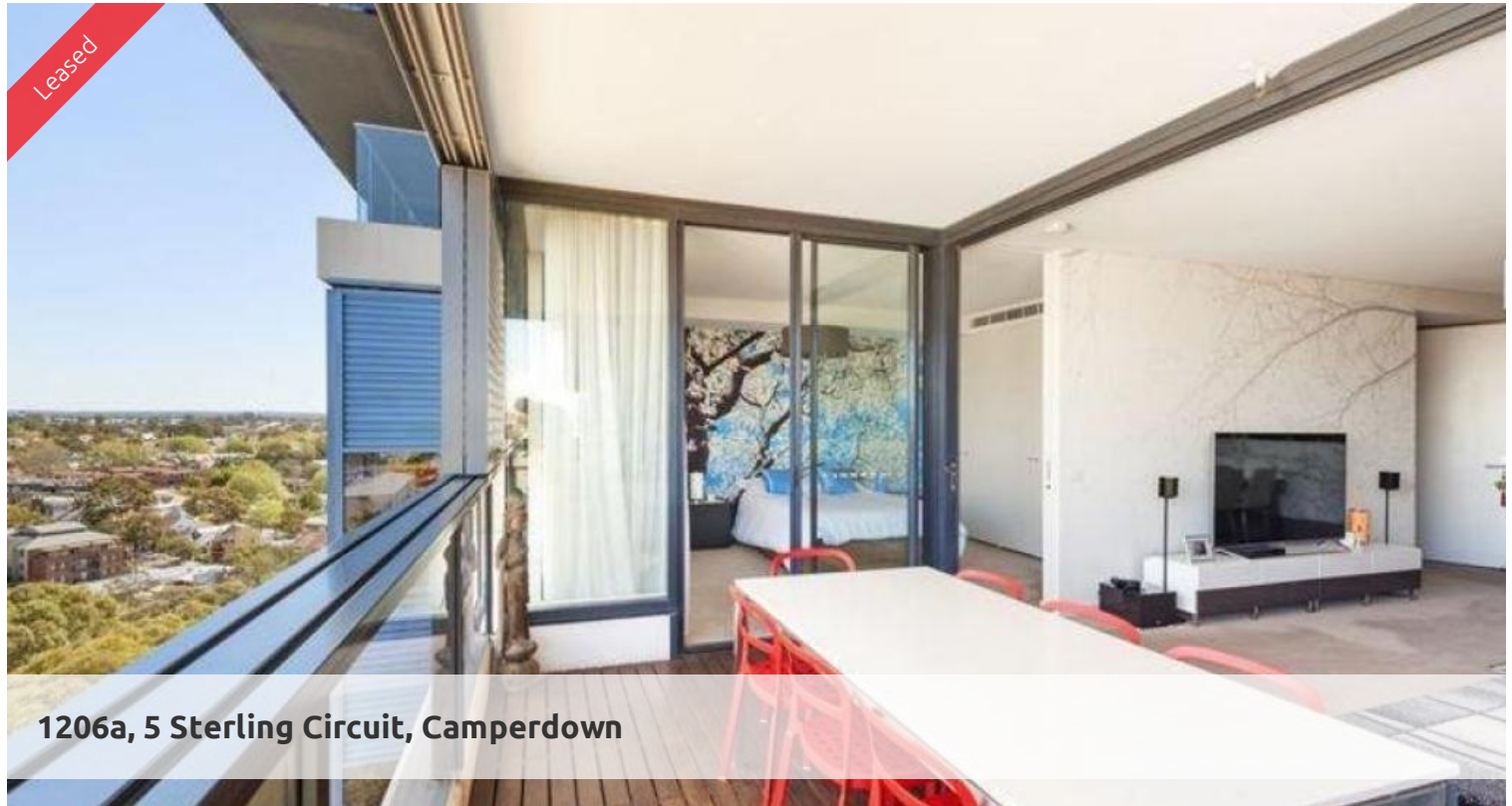


Leased



1206a, 5 Sterling Circuit, Camperdown



## PROPERTY LEASED! WEDNESDAY OPEN HOME INSPECTION CANCELLED!

Fabulous one bedroom apartment perfectly positioned on the twelfth floor of the North building of sought after "Trio". With a Westerly aspect additional features include:

- Spacious living area flowing to generous loggia with timber decking
- Ultra modern galley style kitchen with gas cook top and dishwasher
- Spacious bedroom with built-in wardrobe, reverse cycle air con
- Sleek bathroom with separate bath and shower, internal laundry
- Security building with lift, two undercover car spaces and storage
- Part of a dual key apartment, studio occupied only a few times during the year

Being in The City Quarter Complex you will be able to enjoy the free, unlimited access to your choice of a 50 metre outdoor or 25m indoor pool and two gymnasiums. The complex also has 24 hour security, a Japanese restaurant, cafe & convenience store.

Only a 10 minute bus ride to the city or an easy stroll to Annandale shopping village, Glebe, Broadway, Leichhardt and Newtown which are just around the corner.

The above information provided has been furnished to us by the vendor/s. We have not verified whether or not that information is accurate and do not have any belief in one way or the other in its accuracy. We do not accept any responsibility to any person for its accuracy and do no more than pass it on. All interested parties should make and rely upon their own inquiries in order to determine whether or not this information is in fact accurate.

1 1 2

**Price**  
**Property Type**  
**Property ID**

P.O.A.  
Rental  
1369

### Agent Details

William Chen - 0430 026 436  
william@greenciff.com.au

### Office Details

Greenciff Sydney Kent St  
Level 10/488 Kent Street Sydney NSW  
2000 Australia  
02 8823 8818

**greenciff**  
Inner city specialists