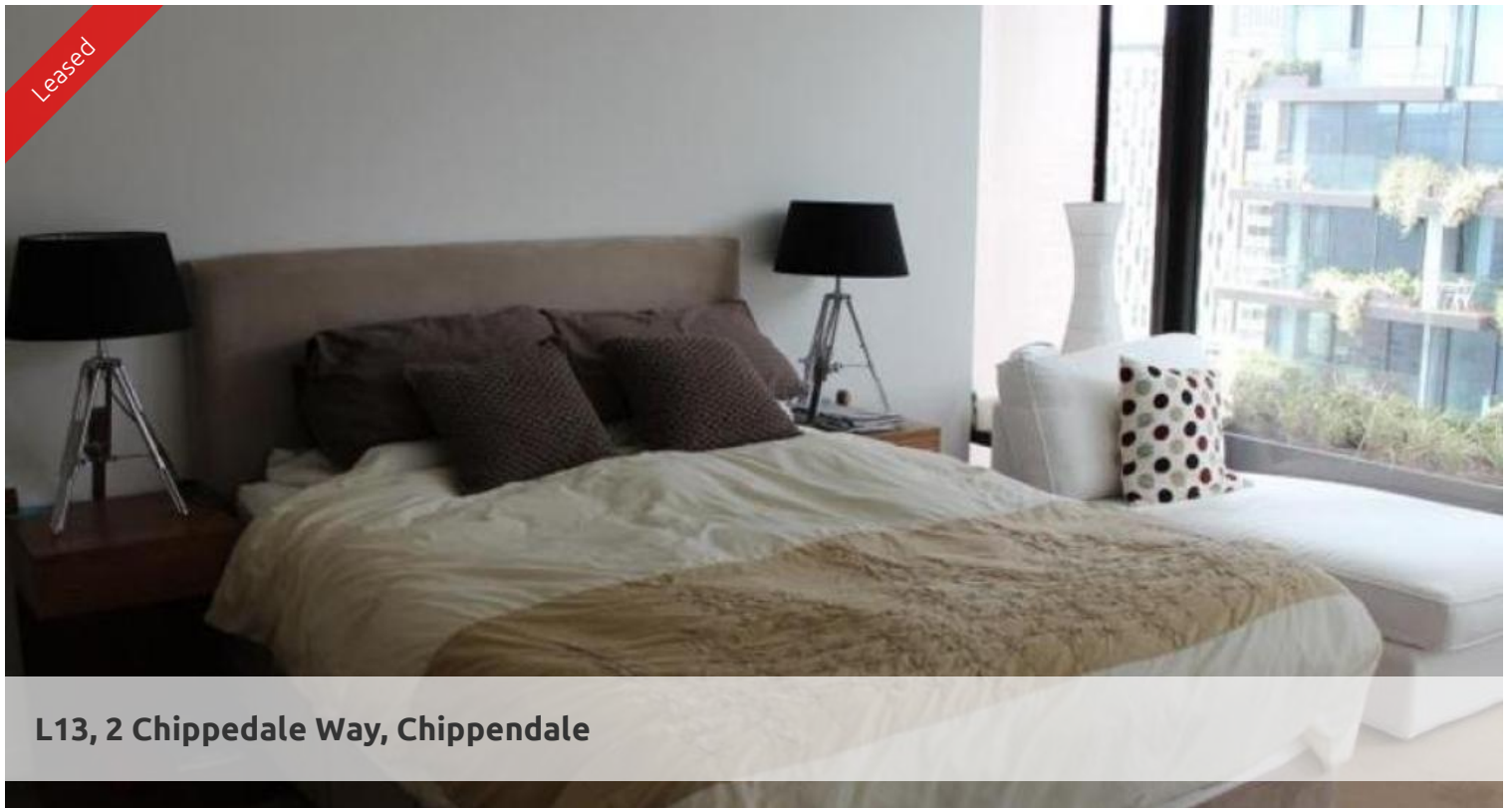
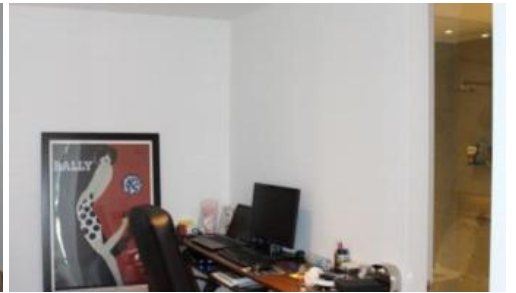
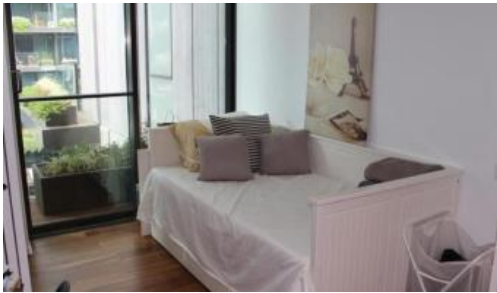


Leased



**L13, 2 Chippendale Way, Chippendale**



### INSPECTION BY PRIVATE APPOINTMENT!

Please meet in the office at 5 Carlton Street Chippendale for inspection.

One Central Park is inner city living at its best!

Two bedroom furnished delight!

Enjoy the convenience of shopping, entertainment, dining and transport right at your doorstep. Built around a beautiful park and draped in a living vertical garden, One Central Park is the perfect combination of luxury meeting nature.

Rich in amenities, this Frasers Property development features:

- Luxury apartments with stainless steel appliances
- Timber floor
- Security building with 24 hour concierge
- Fitness centre with pool, gymnasium & spa
- 6 star green rated development
- 5 level shopping centre with Woolworths
- City, district or park views from all apartments
- Storage included
- Fridge and washer/dryer included
- Stylishly furnished
- More than 30,000sqm of surrounding park and public space.

For further information or to inspect, please call Nana Huang on 0402 653 919 or on 02 9199 6555

🛏 2 📶 1 🚗 1

**Price**

P.O.A.

**Property Type**

Rental

**Property ID**

1280

### Agent Details

William Chen - 0430 026 436  
william@greenciff.com.au

### Office Details

Greenciff Sydney Kent St  
Level 10/488 Kent Street Sydney NSW  
2000 Australia  
02 8823 8818

**greenciff**  
Inner city specialists