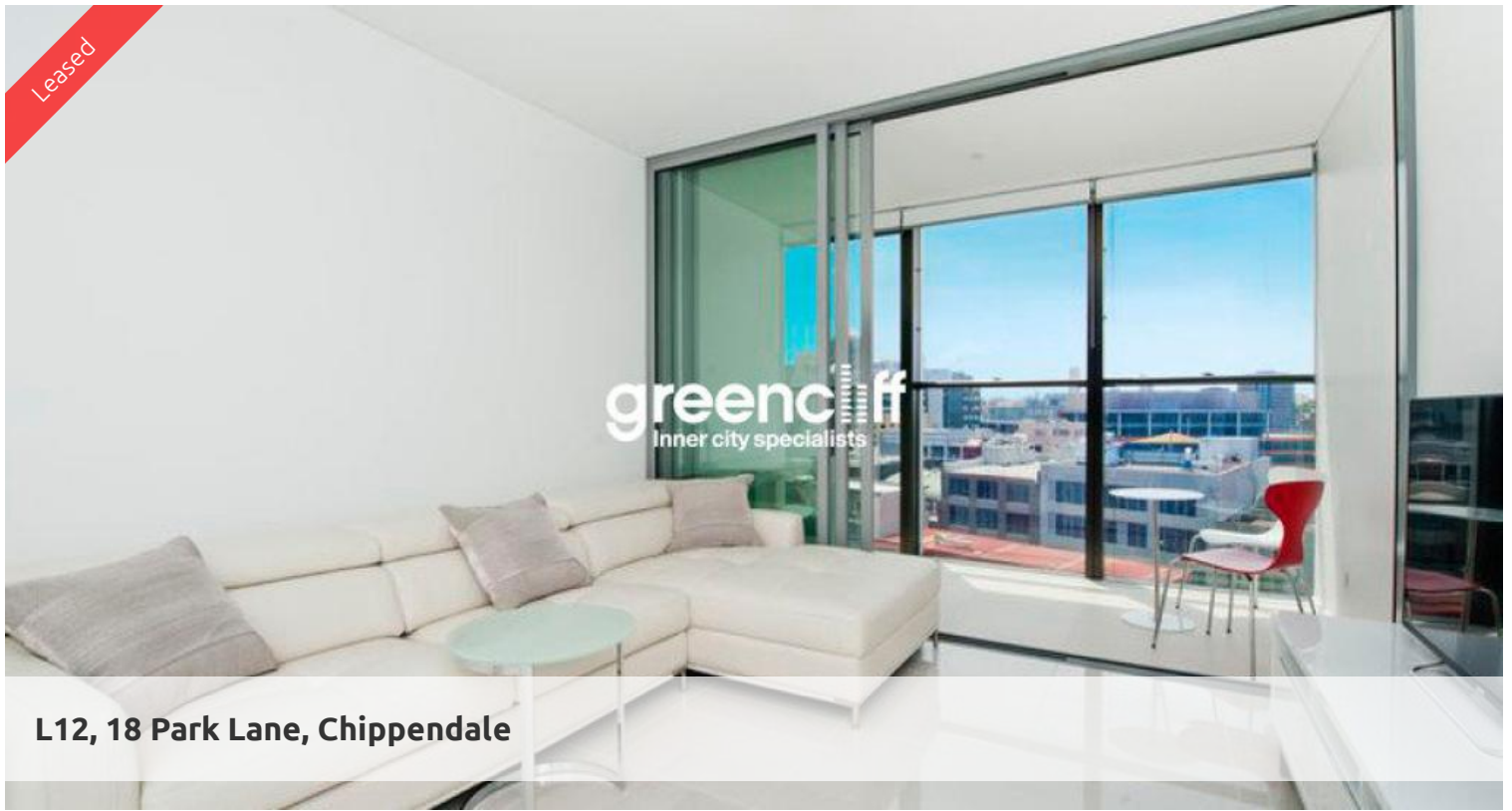
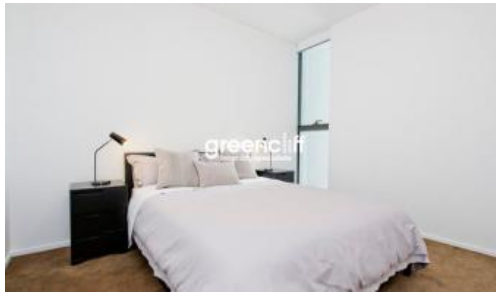


Leased



L12, 18 Park Lane, Chippendale



*** Leased ***

Furnished One bedroom apartment from \$700 per week

Be the first to reside at The Mark

"The Mark is the future of vibrant inner city living and a shining example of all that advanced technologies and bold imaginations can contribute to modern and sustainable living"

Located at Central Park Chippendale, The Mark has direct access to a fully equipped gymnasium, an elevated outdoor pool and on your doorstep is an expansive tree lined park named Chippendale Green. Fashionable retail outlets, a Woolworths supermarket and various cafes and eateries such as Din Tau Fung available to your heart's content.

Moments to Central stations, buses and surrounding Universities makes living at Central Park the ultimate in downtown living.

The Mark is the ultimate lifestyle precinct.

The apartments boast intelligent and lifestyle-savvy interiors, features

- Ducted air conditioning
- Loggia for indoor/outdoor living
- Fridge and washer/dryer included
- European kitchen appliances/stone bench tops
- The latest bathroom fittings and design
- Selection of timber flooring to the living areas/carpeted bedrooms
- Security intercom system

🛏 1 🚿 1

Price From \$700 per week
Property Type Rental
Property ID 1263

Agent Details

William Chen - 0430 026 436
william@greenciff.com.au

Office Details

Greenciff Sydney Kent St
Level 10/488 Kent Street Sydney NSW
2000 Australia
02 8076 8006

greenciff
Inner city specialists