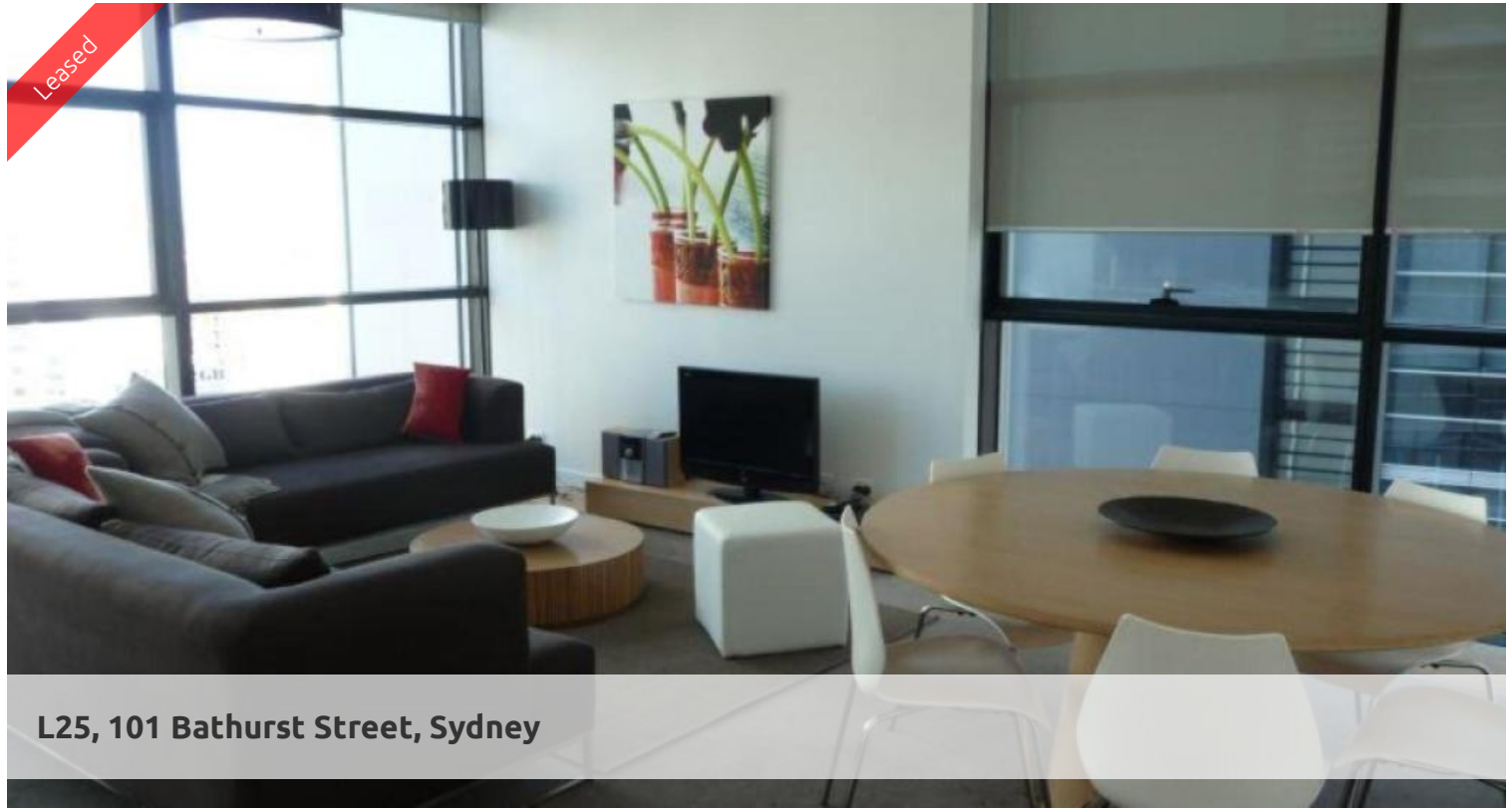
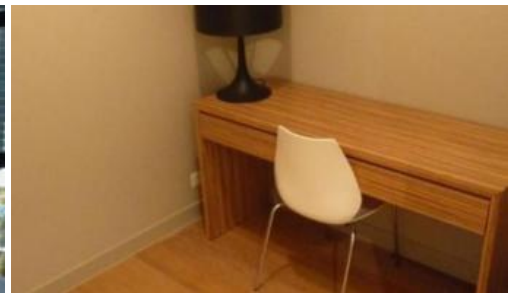
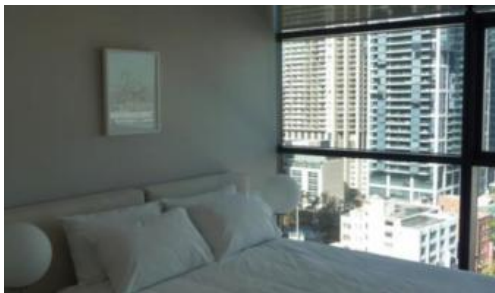


Leased



L25, 101 Bathurst Street, Sydney



APPLICATION APPROVED - CONTACT AGENT

Available in the sought after Lumiere Building, is this south west facing apartment with city views and generous natural lighting.

Apartment Features:

- Timber flooring throughout with carpet in bedroom
- Additional room for home office/study
- Modern Kitchen Facilities with dishwasher
- Grand bathroom
- Floor to ceiling glass windows
- Internal laundry with dryer
- Minimum 12 months lease
- Electricity included in the rent

Building Features:

- Facilities include access to spectacular indoor/outdoor 50 & 20 metre pool, sauna, spa, gym, function room & 2 cinemas.
- 24-hour concierge reception
- 56 level residential tower
- Dramatic three-storey glass atrium lobby
- First class spacious & well equipped gym
- Five high-speed 'intelligent' elevators
- Full height doors & tinted windows
- 24-hour on sight security

For further information or to inspect, please call Jody Zhang 0404 586 699 or 8823 8818

🛏 1 🚿 1 🚗 1

Price

P.O.A.

Property Type

Rental

Property ID

1177

Agent Details

William Chen - 0430 026 436
william@greenciff.com.au

Office Details

Greenciff Sydney Kent St
Level 10/488 Kent Street Sydney NSW
2000 Australia
02 8823 8818

greenciff
Inner city specialists