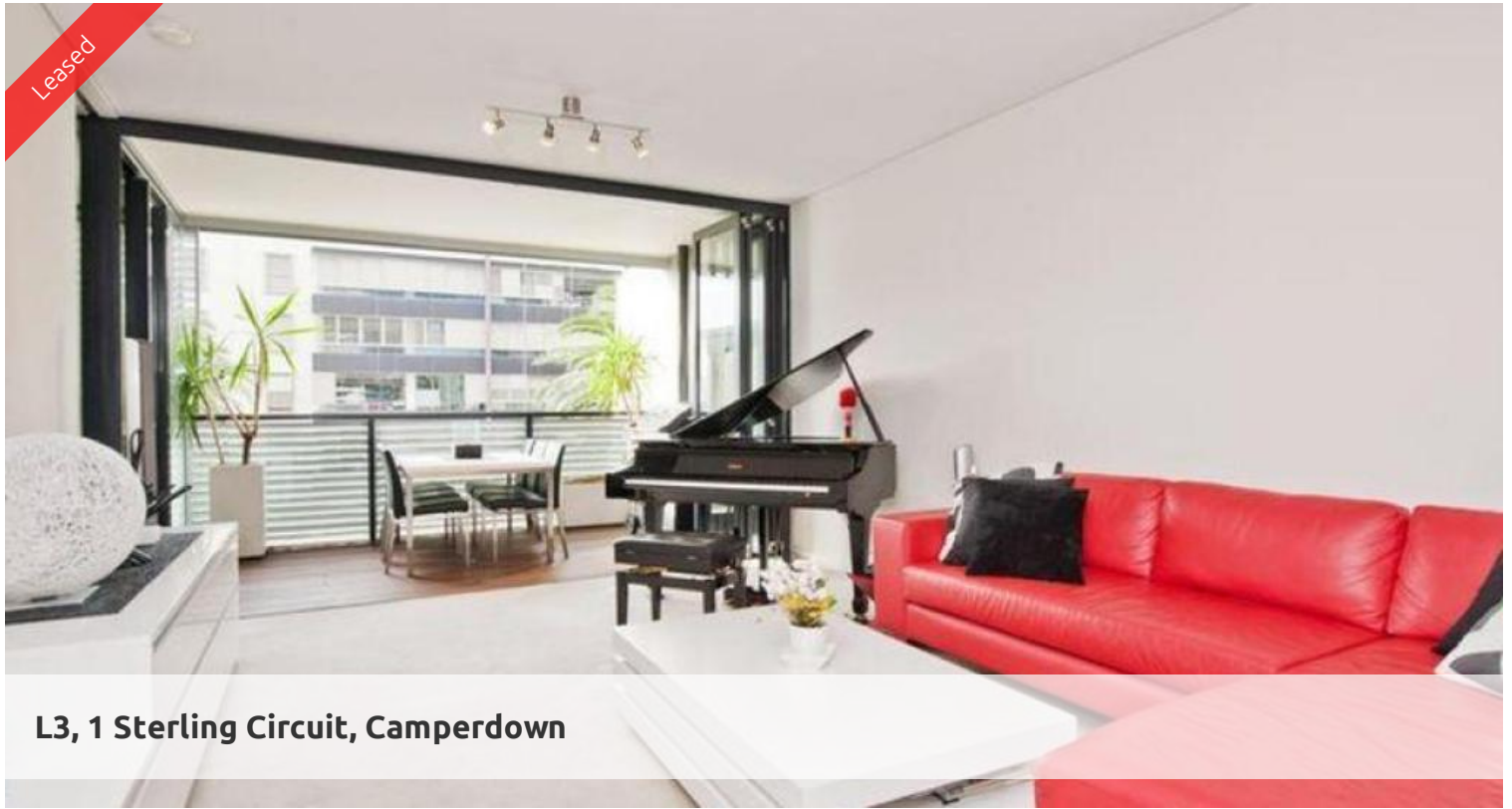


Leased



**L3, 1 Sterling Circuit, Camperdown**



## TRIO

Greencliff - Official On-Site Rental Management Team for City Quarter, Camperdown.

Occupying an elevated site on the corner of Booth Street and Pyrmont Bridge Road, Camperdown, Trio is a bold and brilliant addition to the landscape.

Trio combines the cosmopolitan culture and accessibility of the Inner West with all the benefits of living spaces designed for the most modern of lifestyles. Sculptural gardens infiltrate the foyer, meshing the building with its environment. Inside the story is equally modern, loggias which enhance and add flexibility to the open plan.

Trio is just a 10 minutes bus ride to Sydney CBD, with major universities, RPA Hospital, Broadway Shopping Centre, Annandale shopping village and transport all within walking distance.

Apartment features: -

- Spacious living area boasting tranquil leafy outlook
- Ultra modern open plan kitchen with gas cook top and dishwasher
- Private loggia with timber decking, ideal for alfresco entertaining
- Large bedroom with built-in wardrobe, light and airy throughout
- Dedicated study space, ideal for home office, internal laundry
- Dual access bathroom with separate bath and shower
- Undercover security carspace
- Ducted air conditioning

Enjoy unlimited access to your choice of a 50 metre outdoor or 25m indoor pool and

1 1 1

**Price**

P.O.A.

**Property Type**

Rental

**Property ID**

1126

### Agent Details

William Chen - 0430 026 436  
william@greencliff.com.au

### Office Details

Greencliff Sydney Kent St  
Level 10/488 Kent Street Sydney NSW  
2000 Australia  
02 8823 8818

**greenc**  **ff**  
Inner city specialists