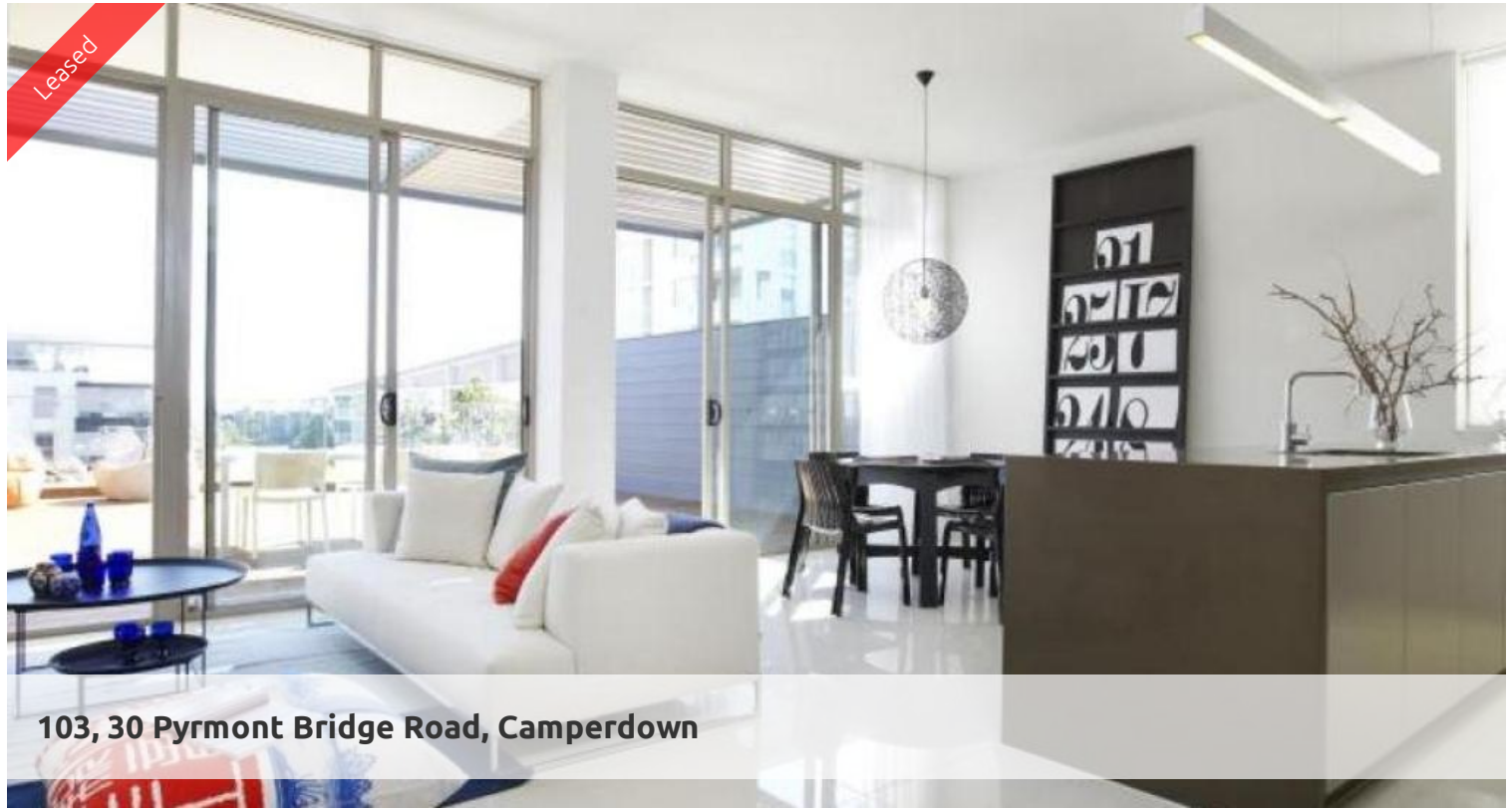
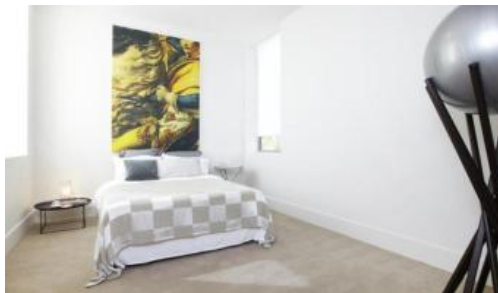
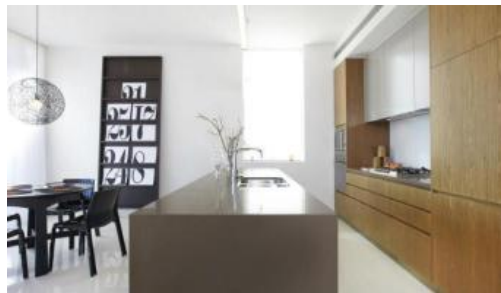


Leased



103, 30 Pyrmont Bridge Road, Camperdown



'ALEXANDRA" TWO BEDROOM APARTMENT WITH CAR SPACE

This magnificent grand heritage restored two bedroom apartment is superbly located within the sought after Alexandra within the City Quarter. Boasting an impressive entrance, soaring high ceilings, abundant heritage windows and offering loads of natural light, additional features include.

Gourmet kitchen with gas cook top, dishwasher and stone top island bench
Two bathrooms boasting sleek finishes, en-suite with bath, internal laundry
Two spacious bedrooms, both with built-in wardrobes, light and airy throughout
Generous living flowing to giant timber decked courtyard, ideal for alfresco entertaining
Air conditioned, security building, lift and car space.

Alexandra is part of City Quarter, an award-winning Inner West neighbourhood on the northern edge of Camperdown, between Glebe and Annandale. Alexandra's residents enjoy all the benefits of City Quarter, including indoor heated swimming pool, 50m outdoor pool, choice of two gymnasiums, cafes and restaurant.

The above information provided has been furnished to us by the vendor/s. We have not verified whether or not that information is accurate and do not have any belief in one way or the other in its accuracy. We do not accept any responsibility to any person for its accuracy and do no more than pass it on. All interested parties should make and rely upon their own inquiries in order to determine whether or not this information is in fact accurate.

2 2 1

| | |
|----------------------|-----------|
| Price | \$900 p/w |
| Property Type | Rental |
| Property ID | 1103 |

Agent Details

William Chen - 0430 026 436
william@greencliff.com.au

Office Details

Greencliff Sydney Kent St
Level 10/488 Kent Street Sydney NSW
2000 Australia
02 8823 8818

greencff
Inner city specialists