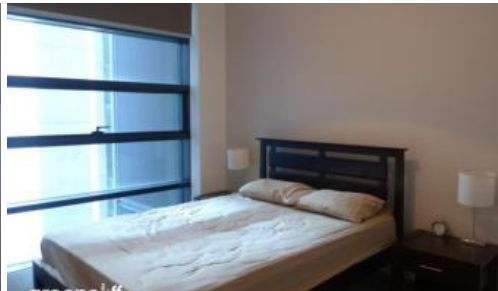
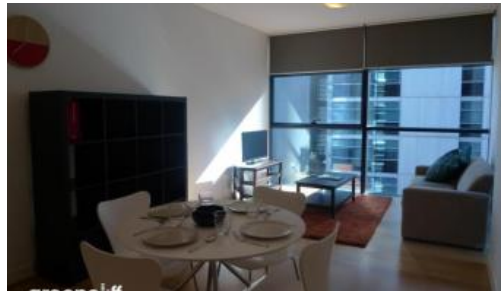




**2614, 101 Bathurst Street, Sydney**



## CONTACT AGENT

Located in the heart of Sydney's iconic Town Hall precinct, Lumiere at Regent Place is a residential village in the sky. Consisting of an elegant glass tower floating above a new retail & commercial arcade, Regent Place.

Soaring 56 levels, Lumiere Residences features a collection of light-filled and spacious homes that embrace the historic surrounds. A living innovation in every sense, Lumiere at Regent Place is set to transform this prestigious mid-town precinct of Sydney into a vibrant living quarter.

This furnished 1 bedroom is available to move right into.

Lumiere features world class facilities including

- 24 hour security and concierge
- 2 private cinemas
- 50 meter swimming pool
- Spa, sauna and steam room
- Meeting areas

For further information or to inspect, please call Jody Zhang 0404 586 699 or 8823 8818

\*Photographs used may be indicative.

The above information provided has been furnished to us by the vendor/s. We have not verified whether or not that information is accurate and do not have any belief in one way or the other in its accuracy. We do not accept any responsibility to any person for its accuracy and do no more than pass it on. All interested parties should make and rely upon their own inquiries in order to determine whether or not this information is in fact accurate.

1 1

**Price**

**Property Type**

**Property ID**

P.O.A.

Rental

1004

## Agent Details

William Chen - 0430 026 436

[william@greenciff.com.au](mailto:william@greenciff.com.au)

## Office Details

Greenciff Sydney Kent St

Level 10/488 Kent Street Sydney NSW

2000 Australia

02 8076 8006

**greenciff**  
Inner city specialists