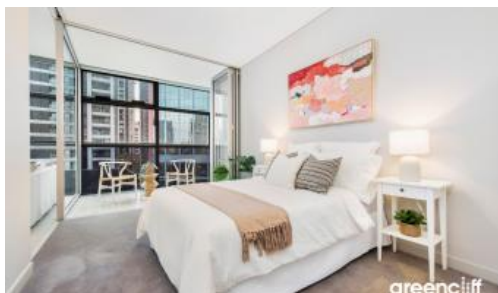


Sold



2306, 101 Bathurst St, Sydney



## Spacious One Bedroom plus Study Apartment in the Prestigious Lumiere Building

Located high on level 23, this premium east facing residence boasts one of Lumiere's most desirable floor plans. Enhanced with tasteful finishes, this sleek and stylish apartment affords captivating views of Sydney's skyline. Spanning 65 square meters internally with ample space to accommodate a second bed for guests, a nursery, or a study corner. The tranquil bedroom features ample natural light that opens to the Loggia. With its prime location and upscale amenities, this apartment epitomizes luxurious urban living.

### Property Highlights:

- Open-plan living and dining area enveloped by floor-to-ceiling glass, offering abundant natural light
- Sleek gas kitchen with island, gas cook-top and quality appliances
- Massive entry area that can be used as a nursery
- Generously sized bedroom with full built-ins
- Cleverly concealed European laundry with added space for storage
- Ample cabinetry and storage spaces
- Secure building with intercom access and 24/7 concierge service

Unlimited access to Club Lumiere facilities featuring a 50-metre heated indoor swimming pool, spa, steam room, sauna, 2 gyms plus yoga/ dance room, private cinemas and residents lounge. 24 hours concierge services and security.

🛏 1 🚿 1 📏 70 m<sup>2</sup>

### Price

SOLD

### Property Type

Residential

### Property ID

6943

### Land Area

70 m<sup>2</sup>

### Agent Details

William Chen - 0430 026 436

[william@greenciff.com.au](mailto:william@greenciff.com.au)

### Office Details

Greenciff Sydney Kent St  
Level 10/488 Kent Street Sydney NSW  
2000 Australia  
02 8823 8818

**greenciff**  
Inner city specialists