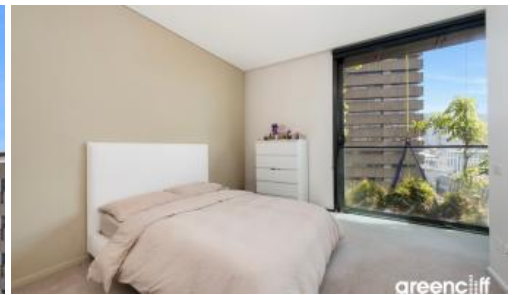
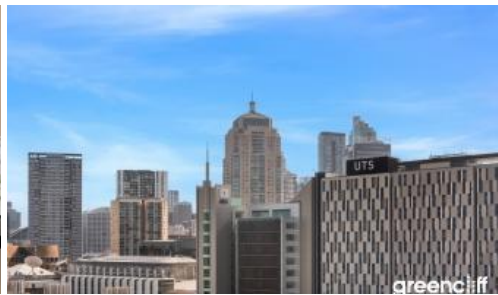




E1004, 3 Carlton St, Chippendale



Spacious one bedroom with views of Sydney's northern sky

Experience luxury living in this impeccably maintained apartment, nestled within the iconic world's tallest vertical garden. Designed by renowned architects Jean Nouvel and Koichi Takada, this executive residence offers breathtaking views of Sydney's northern sky. Flooded with natural light, the interior features floor-to-ceiling windows and elegant timber floorboards, seamlessly blending with the lush park surroundings.

Indulge in resort-style amenities including exclusive access to world-class gym and a refreshing 25-meter skypool swimming pool. Situated in the bustling heart of the CBD, you'll find convenience at your doorstep with retail shops, including Woolworths. Explore nearby culinary delights at Spice Alley and acclaimed restaurants, while universities, Chinatown, and Central Station are all within walking distance.

Live the epitome of urban sophistication with this exceptional apartment offering unparalleled quality living.

Highlights

- North aspect with a desirable city views
- Luxury stone bench top with gas cooking, plenty of cabinetry
- Floor-to-ceiling sliding window/door maximizes natural sunlight
- Spacious double bedroom with full built-ins
- Ducted conditioning and concealed laundry

🛏 1 🚿 1 🚗 1 📏 95 m2

| | |
|----------------------|-----------------------|
| Price | Price Guide \$850,000 |
| Property Type | Residential |
| Property ID | 6934 |
| Land Area | 95 m2 |

Inspection Times

Sat 11 May, 11:30 AM - 12:00 PM

Agent Details

Danny Yeung - 0451 836 388
 danny@greenciff.com.au
 William Chen - 0430 026 436
 william@greenciff.com.au

Office Details

Greenciff Central Park Office
 101/5 Carlton Street Chippendale NSW
 2008 Australia
 02 9199 6555

greenciff
 Inner city specialists