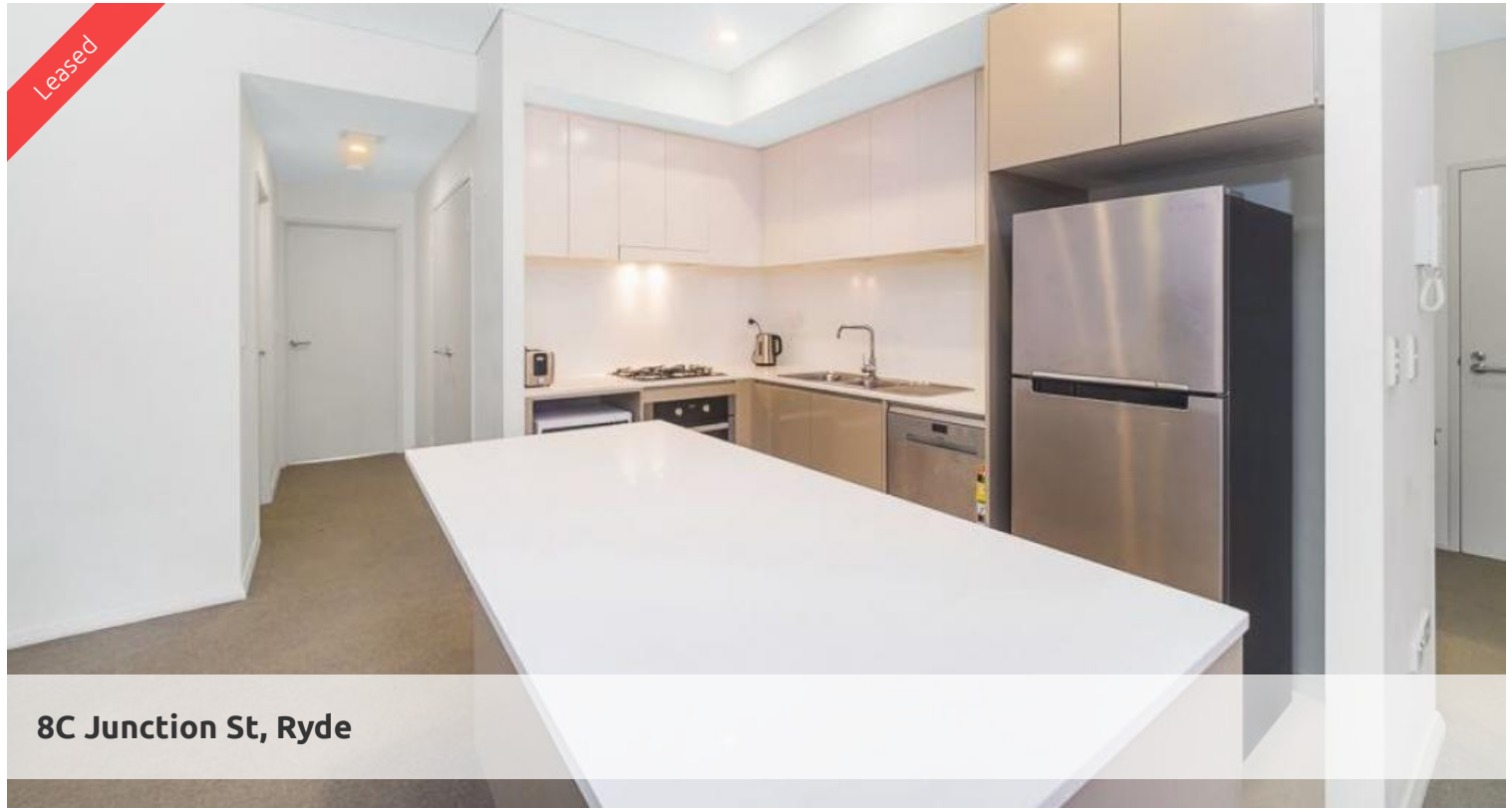
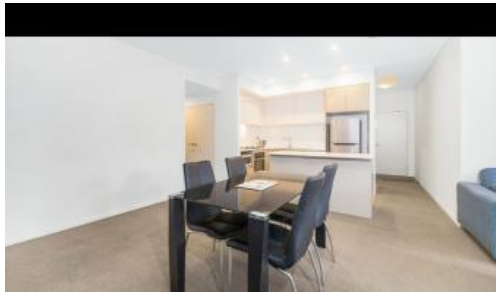


Leased



8C Junction St, Ryde



SPACIOUS 2BEDROOM WITH PARKING !

This large level 2, two-bedroom apartment is ideally located within walking distance to the Meadowbank train station and will tick all the boxes for your next home

The apartment features:

- Spacious combined lounge and dining area leading to a large North facing covered balcony
- Modern Kitchen with island bench, gas cooking and dishwasher
- 2 double sized bedrooms, both with mirrored built-ins, main featuring ensuite bathroom
- Internal Laundry with dryer
- Air conditioning
- NBN connected
- Secure parking for 1 car

This apartment is a must to inspect!

The above information provided has been furnished to us by the vendor/s. We have not verified whether or not that information is accurate and do not have any belief in one way or the other in its accuracy. We do not accept any responsibility to any person for its accuracy and do no more than pass it on. All interested parties should make and rely upon their own inquiries in order to determine whether or not this information is in fact accurate.

🛏 2 🚿 2 🚗 1

Price

LEVEL 2 | \$770 PW |
DEPOSIT TAKEN

Property Type

Rental

Property ID

6921

Agent Details

Tammy (Rungnapa) Kanittanon - 0431
511 907 tammy@greencliff.com.au

Office Details

Greencliff Camperdown Office
Shop 1 1 Sterling Cct Camperdown NSW
2050 Australia
02 8262 8262

greenc **ff**
Inner city specialists