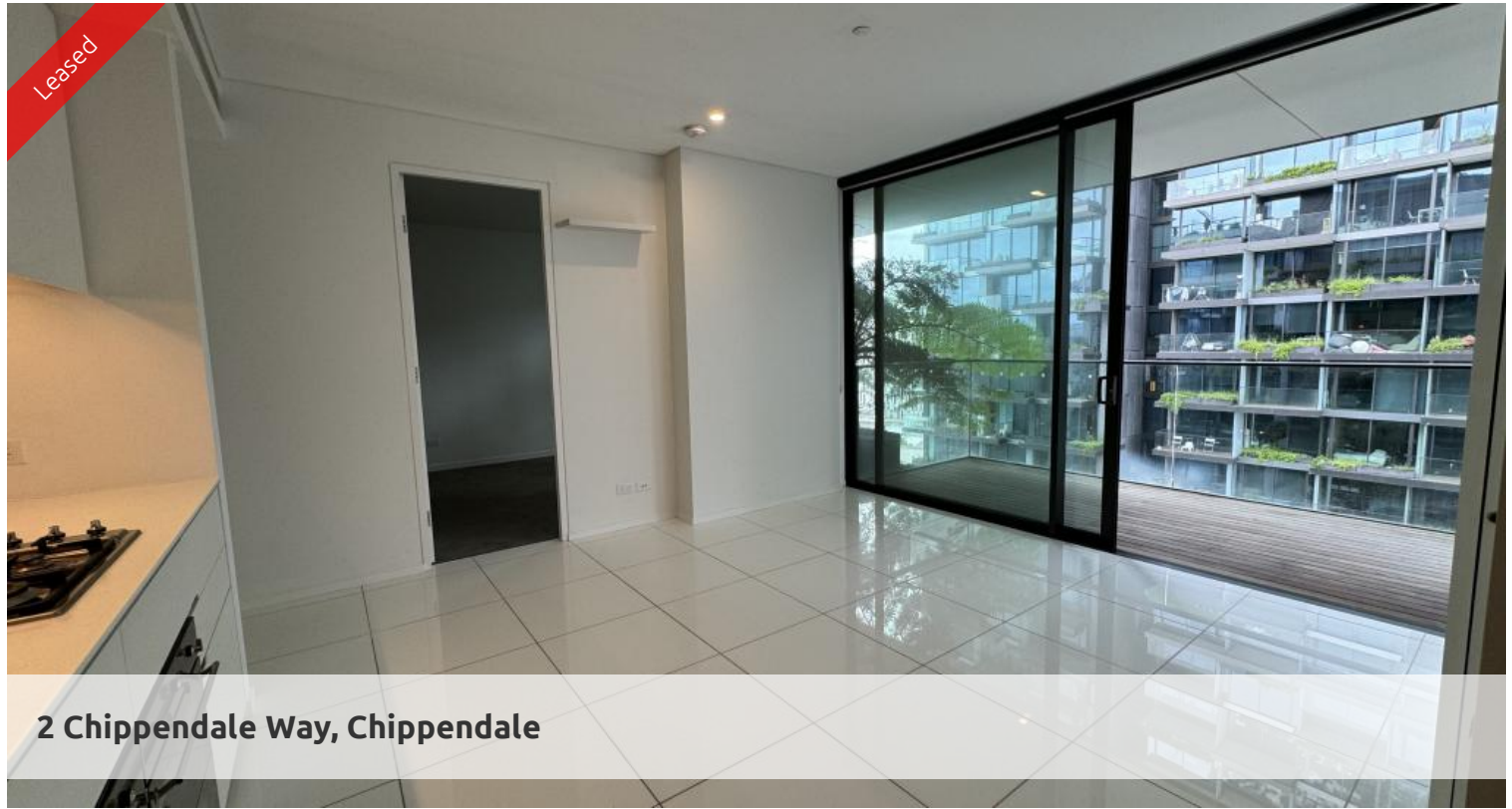


Leased



2 Chippendale Way, Chippendale



## MODERN & SPACIOUS TWO BEDROOMS IN CENTRAL PARK

**Please meet at our office at 5 Carlton St, Chippendale a few minutes before to register and inspect.**

One Central Park is inner city living at its best!

Enjoy the convenience of shopping, entertainment, dining and transport right at your doorstep. Built around a beautiful park and draped in a living vertical garden, One Central Park is the perfect combination of luxury meeting nature.

Rich in amenities, this Central Park development features:

- Near new luxury apartments with stainless steel appliances
- Tiled floor
- Security building with 24 hour concierge
- Fitness centre with pool, gymnasium & spa
- 6 star green rated development
- 5 level shopping centre with Woolworths
- City and district from the apartment.
- Fridge and washer/dryer included
- More than 30,000sqm of surrounding park and public space.

 2  1

**Price**

LEVEL 14 | DEPOSIT TAKEN -  
INSPECTION CANCELED

**Property Type** Rental  
**Property ID** 6891

### Agent Details

Daniel Ho - 0424 089 868  
daniel@greencliff.com.au

### Office Details

Greencliff Central Park Office  
101/5 Carlton Street Chippendale NSW  
2008 Australia  
02 9199 6555

**greenc**  **ff**  
Inner city specialists