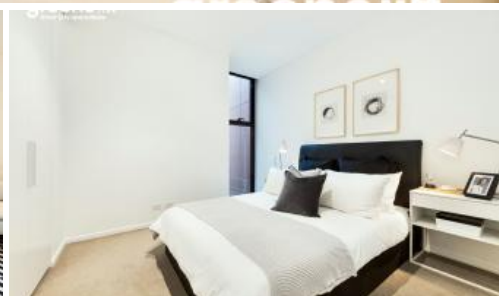
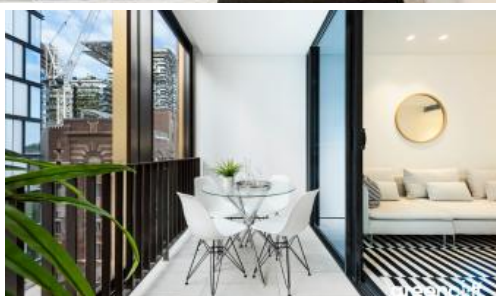


Sold



701, 8 Central Park Ave, Chippendale



## Connor one bedroom apartment for sale

This low maintenance one bedroom apartment is great for first home buyer or investor looking for high rental return. It offers contemporary living and smart design. Connor at Central Park in Chippendale won the award for Excellence in High-Density Development.

### Features include:

- north facing
- balcony
- eerverse cycle air conditioning
- 12/7 concierge
- spa
- cardio room
- BBQ

### Outgoings per quarter (approx.):

- Strata Fees \$1,417
- Council Rates \$300

### Potential rent:

\$800 per week

1 bed 1 bath

**Price**  
**Property Type**  
**Property ID**

SOLD for \$695,000  
Residential  
6642

### Agent Details

William Chen - 0430 026 436  
william@greenciff.com.au  
Danny Yeung - 0451 836 388  
danny@greenciff.com.au

### Office Details

Greenciff Central Park Office  
101/5 Carlton Street Chippendale NSW  
2008 Australia  
02 9199 6555

**greenciff**  
Inner city specialists