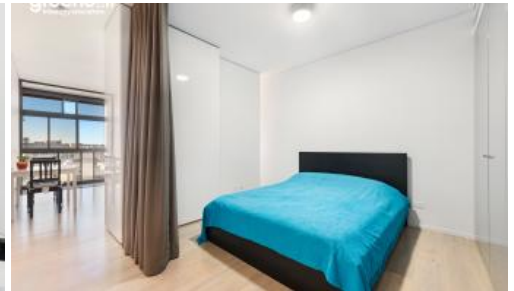




**1208, 8 Park Lane, Chippendale**



## High Level One Bed Suites in Central Park with Great Outlook

Perfect to occupy or invest! Located in the heart of Central Park, this beautifully presented one-bedroom suite offers spectacular east facing views from the twelfth floor of 8 Park Lane. This apartment presents an open plan living and dining space, perfect for city living. Modern fixtures and appliances including fridge, smeg gas cooking, microwave, oven washing machine/dryer are all included. Step outside to the park, where shopping, entertainment, dining, bars and galleries are also right on your doorstep.

Rich in amenities, this Central Park apartment features:

- Award winning modern design
- Elegant finishes with timber flooring
- East facing views, captured through floor-to-ceiling windows
- winter garden
- Secure storage cage
- Security building with 24 hour concierge
- Fitness centre with heated pool, commercial sized gym & spa
- 6 star green rated development
- 5 level shopping centre with Woolworths

This apartment offers an abundance of amenities right at your doorstep. Step right out onto Broadway, Central Park Mall, Central Station, Spice Alley, UTS, Sydney University, Haymarket and City Centre.

1 1

**Price**  
**Property Type**  
**Property ID**

Contact Agent  
Residential  
6532

### Agent Details

William Chen - 0430 026 436  
william@greenciff.com.au  
Danny Yeung - 0451 836 388  
danny@greenciff.com.au

### Office Details

Greenciff Central Park Office  
101/5 Carlton Street Chippendale NSW  
2008 Australia  
02 9199 6555

**greenciff**  
Inner city specialists