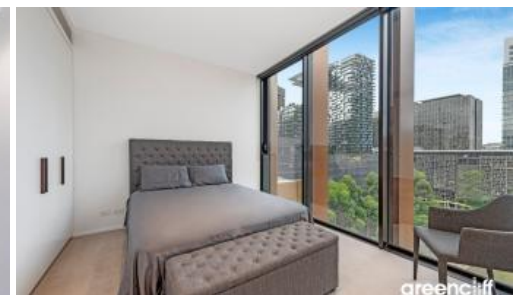


**903, 8 Central Park Ave, Chippendale**



## Park facing 2 bed apartment in the award-winning development, Central Park

New condition perfectly positioned on level 9 of the 12 level Connor building designed by William Smart, completed in February 2017. This stunning East facing 2 bedroom apartment boasts a unique floorplan in the building with spacious open plan living area, good sized bedrooms and excellent park views from each room of the apartment.

Located in the prestigious Central Park development, you will relish being in the midst of Sydney's premier world class dining, retail and entertainment hub. From here, every corner of the city is easily accessible and within walking distance. The CBD, Darling Harbour, Chinatown, Universities and colleges are just moments away.

- natural sunlight throughout
- An impeccable combination of substance and style
- Communal roof terrace with jacuzzi and barbecue
- Well-proportioned bedrooms, deluxe stainless gas kitchen
- Communal residents lounge

🛏 2 🚿 2 🚗 1

**Price**

SOLD

**Property Type**

Residential

**Property ID**

6022

### Agent Details

William Chen - 0430 026 436

[william@greenciff.com.au](mailto:william@greenciff.com.au)

Danny Yeung - 0451 836 388

[danny@greenciff.com.au](mailto:danny@greenciff.com.au)

### Office Details

Greenciff Central Park Office

101/5 Carlton Street Chippendale NSW

2008 Australia

02 9199 6555

**greenciff**  
Inner city specialists