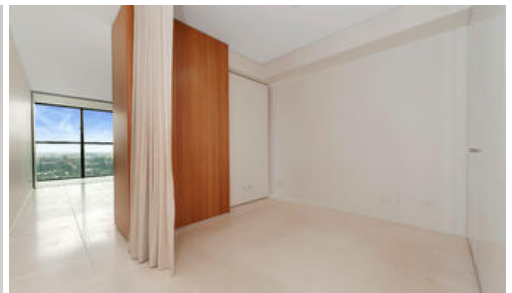


2312, 18 Park Lane, Chippendale



One Bed Suite With Extensive Park Views

Maximum Space and Privacy!

The interior benefits from a finish upgrade to marble and mirrored splash back in the bathroom and kitchen.

The space of this apartment revolves around a central pod separating the sleeping area from the living and dinning space.

Features

- Concierge
- Balcony
- Double glazed windows
- Gas
- Gym
- Intercom
- Internal Laundry
- Pets allowed
- Swimming Pool

The above information provided has been furnished to us by the vendor/s. We have not verified whether or not that information is accurate and do not have any belief in one way or the other in its accuracy. We do not accept any responsibility to any person for its accuracy and do no more than pass it on. All interested parties should make and rely upon their own inquiries in order to determine whether or not this information is in fact accurate.

1 1

Price

SOLD for \$670,000

Property Type

residential

Property ID

3971

Agent Details

Nicola Ericson - 0410 433 445

nicola@greenciff.com.au

Office Details

Greenciff Sydney Kent St

Level 10/488 Kent Street Sydney NSW

2000 Australia

02 8823 8818

greenciff
Inner city specialists