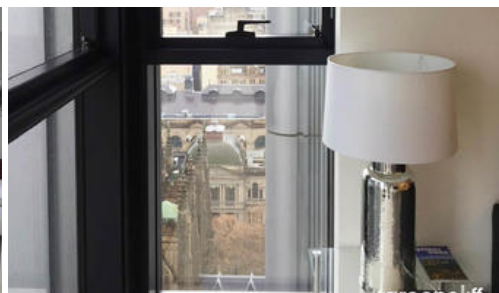
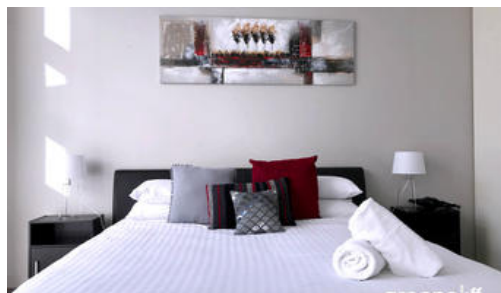


Sold

3015, 101 Bathurst St, Sydney



## LUMIERE IMMACULATE ONE BEDROOM APARTMENT

Inspection by appointment

This executive apartment is a great opportunity to purchase a property in the tightly held 'Lumiere Residences'. Located on level 30, this well designed 1 bedroom apartment has floor to ceiling windows with impeccable attention to detail for low maintenance living in the heart of Sydney CBD. This is an ideal choice for professionals, the perfect lock up and leave base for interstate/ international travelers or an investment option with a high rental yield. Designed by Foster + Partners, positioned with an easy stroll to Town Hall and moments from everything Sydney city has to offer.

Property attributes:

- Open plan lounge and dining with walls of glass
- Sleek stone finished galley kitchen with stainless steel SMEG gas appliances
- Generous carpeted bedroom with built-in wardrobe, ducted air-conditioning
- Indoor/ outdoor 50m swimming pool, spa, sauna, steam room, gymnasium
- Function room, meeting room, 24 hour concierge and on-site 24 hour security

Property outgoings (per quarter):

- Strata Levies \$866
- Council Rates \$227
- Water Rates \$178

The above information provided has been furnished to us by the vendor/s. We have not verified whether or not that information is accurate and do not have any belief in one way or the other in its accuracy. We do not accept any responsibility to any person for its accuracy and do no more than pass it on. All interested parties should make and rely upon their own inquiries in order to determine whether or not this information is in fact accurate.

1 bed 1 bath

|                      |                    |
|----------------------|--------------------|
| <b>Price</b>         | SOLD for \$905,000 |
| <b>Property Type</b> | residential        |
| <b>Property ID</b>   | 3719               |

### Agent Details

Nicola Ericson - 0410 433 445  
nicola@greenciff.com.au  
David Butt - 0404 070 456  
david@greenciff.com.au

### Office Details

Greenciff Sydney Kent St  
Level 10/488 Kent Street Sydney NSW  
2000 Australia  
02 8823 8818

**greenciff**  
Inner city specialists