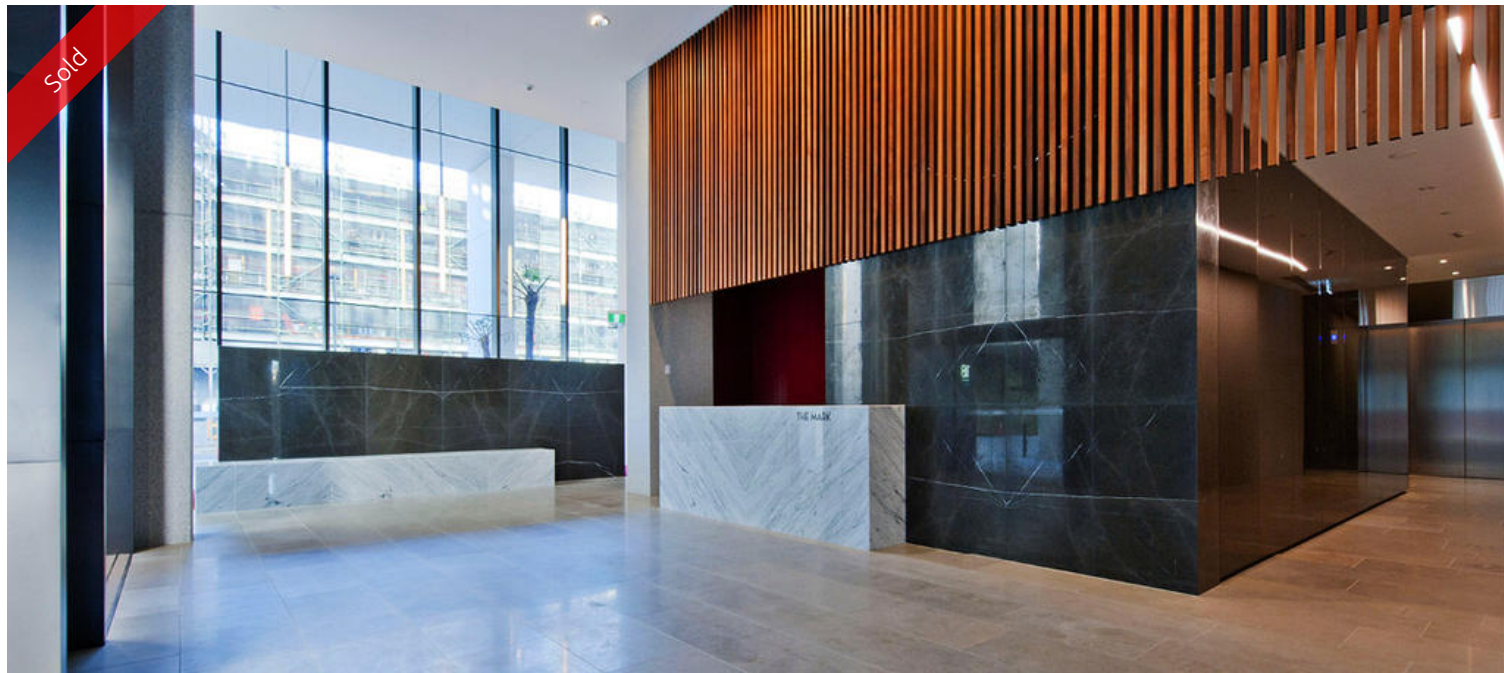


Sold



414, 18 Park Lane, Chippendale



PREMIUM ONE BEDROOM IN PERFECT LOCATION

Apartment 414 is perfect for those looking for an apartment in city location. Less than 1.5km to Sydney Town Hall, the University of Sydney and a 3 minute walk to UTS, Central Station and the central bus interchange.

This apartment is conveniently located at the edge of Sydney's commercial heart and the center of its educational and creative hub. This brilliantly designed one bedroom one bathroom apartment features tiled flooring, spectacular floor to ceiling glass windows with city views. The floorplan utilizes space for maximum functionality and privacy.

Additional storage is included in the basement level.

Outgoings per quarter (Approx):

- Strata Fees \$1,400
- Council Rates \$250
- Water Rates \$150

The above information provided has been furnished to us by the vendor/s. We have not verified whether or not that information is accurate and do not have any belief in one way or the other in its accuracy. We do not accept any responsibility to any person for its accuracy and do no more than pass it on. All interested parties should make and rely upon their own inquiries in order to determine whether or not this information is in fact accurate.

1 1

| | |
|----------------------|--------------------|
| Price | SOLD for \$620,000 |
| Property Type | residential |
| Property ID | 1968 |

Agent Details

Danny Yeung (Hei Yeung) - 0451 836 388 danny@greenciff.com.au
William Chen (Yuanyuan Chen) - 0430 026 436 william@greenciff.com.au

Office Details

Greenciff Central Park Office
101/5 Carlton Street Chippendale NSW
2008 Australia
02 9199 6555

greenciff
Inner city specialists