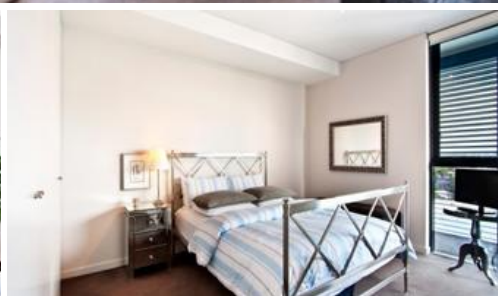


Sold



C901, 3 Sterling Circuit, Camperdown



STYLISH DESIGNER APARTMENT, HIGH LEVEL VIEWS & PRIVACY

This is an exciting opportunity to secure an exclusive piece of real estate in the architecturally designed Fender Katsalidis, Trio building, Developed to International standards by Frasers Property.

- Spacious pen plan living/dining
- Large entertainers loggia 15sqm
- Gourmet kitchen with Smeg appliances
- Intimate district views over Annandale/Stanmore
- Large bedroom with built-ins and balcony access
- Designer bathroom, separate bath/shower
- Intercom, pool, gym and landscaped gardens
- Ducted air-conditioning, dual-zoned
- Security parking, storeroom
- Immaculately maintained building

Trio is the final stage of the City Quarter development and offers a truly exceptional lifestyle, offering two gyms and two pools (indoor 25 metre and outdoor 50 metre lap) café, restaurants, 24/7 on-site security.

Absolute convenience only moments from Glebe and Annandale Village, close

The above information provided has been furnished to us by the vendor/s. We have not verified whether or not that information is accurate and do not have any belief in one way or the other in its accuracy. We do not accept any responsibility to any person for its accuracy and do no more than pass it on. All interested parties should make and rely upon their own inquiries in order to determine whether or not this information is in fact accurate.

🛏 1 🚿 1 🚗 2

Price	SOLD
Property Type	residential
Property ID	1773
Land Area	0 m2
Floor Area	74 m2

Agent Details

Emlyn Walters - 0405 606 025
emlyn@greenciff.com.au

Office Details

Greencliff Camperdown Office
Shop 1 1 Sterling Cct Camperdown NSW
2050 Australia
02 8262 8262

greenciff
Inner city specialists