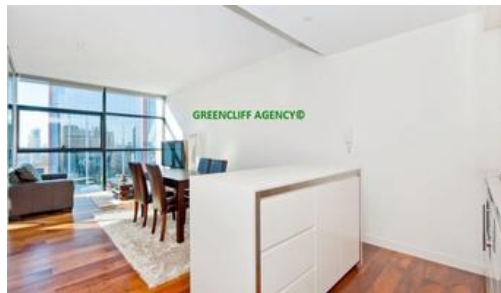




**3706 101 Bathurst Street, Sydney**



## Sought after one bedroom in Lumiere Residences Sydney.....SOLD!

Located on level 37 of the award winning Lumiere Residences Sydney enjoying a spacious layout and immaculate presentation.

Offering a generous 65sqm internal of internal living space, one security car space, internal laundry, wooden floor boards, ducted air conditioning, smeg appliances and a large storage cage.

With a strong rental yield of \$780pw investors not just owner occupiers should take note

This luxuriously appointed apartment has been architecturally designed award winning Foster & Partners. It enjoys an Easterly aspect with city views. The heritage listed Mid-Town precinct of Town Hall, St Andrews Cathedral & the QVB is at your door step

Make the most of Lumiere's benchmarking Club Lumiere facilities, incorporating 50m pool, gyms, spas, steam room, sauna, theatrette's and full time concierge and security. This apartment offers a wonderful residential opportunity in the heart of Sydney, in Sydney's finest new development.

The above information provided has been furnished to us by the vendor/s. We have not verified whether or not that information is accurate and do not have any belief in one way or the other in its accuracy. We do not accept any responsibility to any person for its accuracy and do no more than pass it on. All interested parties should make and rely upon their own inquiries in order to determine whether or not this information is in fact accurate.

🛏 1 🚿 1 🚗 1

<b>Price</b>	SOLD
<b>Property Type</b>	residential
<b>Property ID</b>	1771
<b>Land Area</b>	0 m2
<b>Floor Area</b>	65 m2

### Agent Details

Nicola Ericson - 0410 433 445  
nicola@greenciff.com.au

### Office Details

Greenciff Sydney Kent St  
Level 10/488 Kent Street Sydney NSW  
2000 Australia  
02 8823 8818

**greenciff**  
Inner city specialists