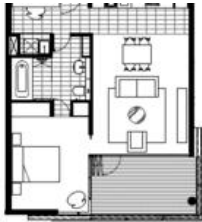




S909 1 Sterling Circuit, Camperdown



TRIO: I II III HIGH END LUXURY, OVERSIZED ONE BEDROOM, 72SQM!

Rarely offered floor plan type in trio, from its privileged position with stunning district views, and highly functional floor plan, this is truly a unique apartment in a much coveted "Inner West" address.

Features include;

- Corner position, 11sqm enclosable loggia
- Spacious bedroom with built-in robes
- Luxury finishes, Smeg appliances
- Reverse cycle air con
- Study/media alcove
- Basement storage

Enjoy all the lifestyle benefits of an established estate, cafe, restaurants, 25 meter indoor pool and gym. 24/7 on site security.

Absolute convenience located between Glebe and Annandale Village, CBD, University, Broadway Shopping Centre, theatres, cafes and vibrant shopping. Royal Price Alfred Hospital.

The above information provided has been furnished to us by the vendor/s. We have not verified whether or not that information is accurate and do not have any belief in one way or the other in its accuracy. We do not accept any responsibility to any person for its accuracy and do no more than pass it on. All interested parties should make and rely upon their own inquiries in order to determine whether or not this information is in fact accurate.

1 bed 1 bath 2 car

Price	SOLD
Property Type	residential
Property ID	1759
Land Area	0 m2

Agent Details

Nicola Ericson - 0410 433 445
nicola@greenciff.com.au

Office Details

Greencliff Sydney Kent St
Level 10/488 Kent Street Sydney NSW
2000 Australia
02 8823 8818

greenciff
Inner city specialists