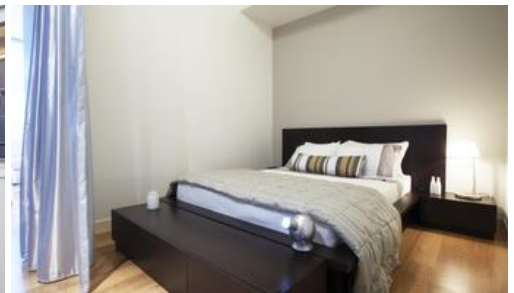




2514, 101 Bathurst Street, Sydney



One bedroom suite in award winning Lumiere Sydney

Offering a high level of finish and a clever use of space. This one bedroom suite would make an great first home, city bolt hole or high yielding investment.

Lumiere is Sydney's most elegant and innovative residential tower. Designed by internationally renowned architect Lord Norman Foster (Foster & Partners London), Lumiere has defined modern living for Sydney as the 'vertical village'.

This one bedroom suite rents for \$600 per week. Its layout offers a comfortable separation of living and sleeping areas. Features include internal laundry facilities, high ceilings with floor to ceiling glass, separate storage cage, ducted air conditioning, 24hr concierge and security.

Lumiere is a place to enjoy yourself, have fun and call home. It is a 'vertical village'. Imagine a new lifestyle with a 50m swimming pool, two gymnasiums, sauna, steam room, spa, dance & yoga room, two private theatrettes for private use & wireless internet.

DISCLAIMER: All information relating to this property contained within this advertisement is subject to change. Greencliff Realty attempts to update the information on this site on a regular basis, but can not guarantee accuracy at all times.

The above information provided has been furnished to us by the vendor/s. We have not verified whether or not that information is accurate and do not have any belief in one way or the other in its accuracy. We do not accept any responsibility to any person for its accuracy and do no more than pass it on. All interested parties should make and rely upon their own inquiries in order to determine whether or not this information is in fact accurate.

1 1

Price

Property Type

Property ID

Land Area

Floor Area

SOLD

residential

1744

0 m2

46 m2

Agent Details

Office Details

Greencliff Sydney Kent St
Level 10/488 Kent Street Sydney NSW
2000 Australia
02 8823 8818

greenc**ff**
Inner city specialists