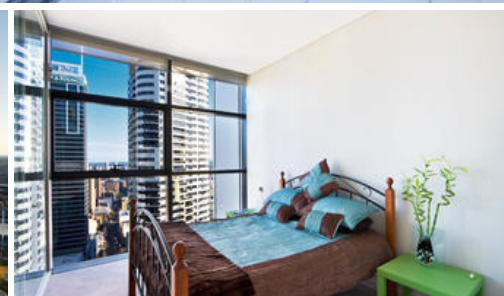


Sold



3607 101 Bathurst Street, Sydney



Lumiere 'Dual Key' apartment, a superb investment offering the flexibility to live and/or invest

Lumiere apartment 3607 is a must see property for discerning inner city owner occupiers and investors alike.

This two bedroom plus study 'Dual key' apartment offers the rare flexibility of being a two bedroom plus study apartment or two separate residences; a studio and one bedroom plus study where owners can live in one and lease the other out or lease both out for an extremely high yielding investment. It currently has tenants utilizing both components of the property paying \$1,130pw.

This luxurious 110sqm two bedroom apartment incorporates the unique Foster & Partners Loggia design concept that seamlessly blends living areas into internal balcony spaces.

Make the most of Lumiere's benchmarking Club Lumiere facilities, incorporating 50m pool, gyms, spas, steam room, sauna, theatre's and full time concierge and security. This apartment offers a wonderful residential opportunity in the heart of Sydney, in Sydney's finest new development.

The above information provided has been furnished to us by the vendor/s. We have not verified whether or not that information is accurate and do not have any belief in one way or the other in its accuracy. We do not accept any responsibility to any person for its accuracy and do no more than pass it on. All interested parties should make and rely upon their own inquiries in order to determine whether or not this information is in fact accurate.

2 2 1

**Price**

**Property Type**

**Property ID**

**Land Area**

**Floor Area**

SOLD

residential

1638

0 m2

111 m2

**Agent Details**

Nicola Ericson - 0410 433 445

nicola@greenciff.com.au

**Office Details**

Greenciff Sydney Kent St

Level 10/488 Kent Street Sydney NSW

2000 Australia

02 8823 8818

**greenciff**  
Inner city specialists